



Climate Risk Informed Development

Global Forum on International Development Cooperation for Climate Change Response in Asia

Arghya Sinha Roy



Image Source: Jessie Ponce

1.ADB

**Approach for
Climate Risk Informed
Development**

Resilience to Climate Change is at the heart of ADB Strategy 2030

Seven Operational Priorities



Target 75% of ADB's of the number of committed operations
(on a 3-year rolling average) will support climate mitigation and adaptation by 2030



Target Climate finance from ADB's own resources reach \$80 billion (2019-2030)

ADB's Holistic Approach for Building Resilience

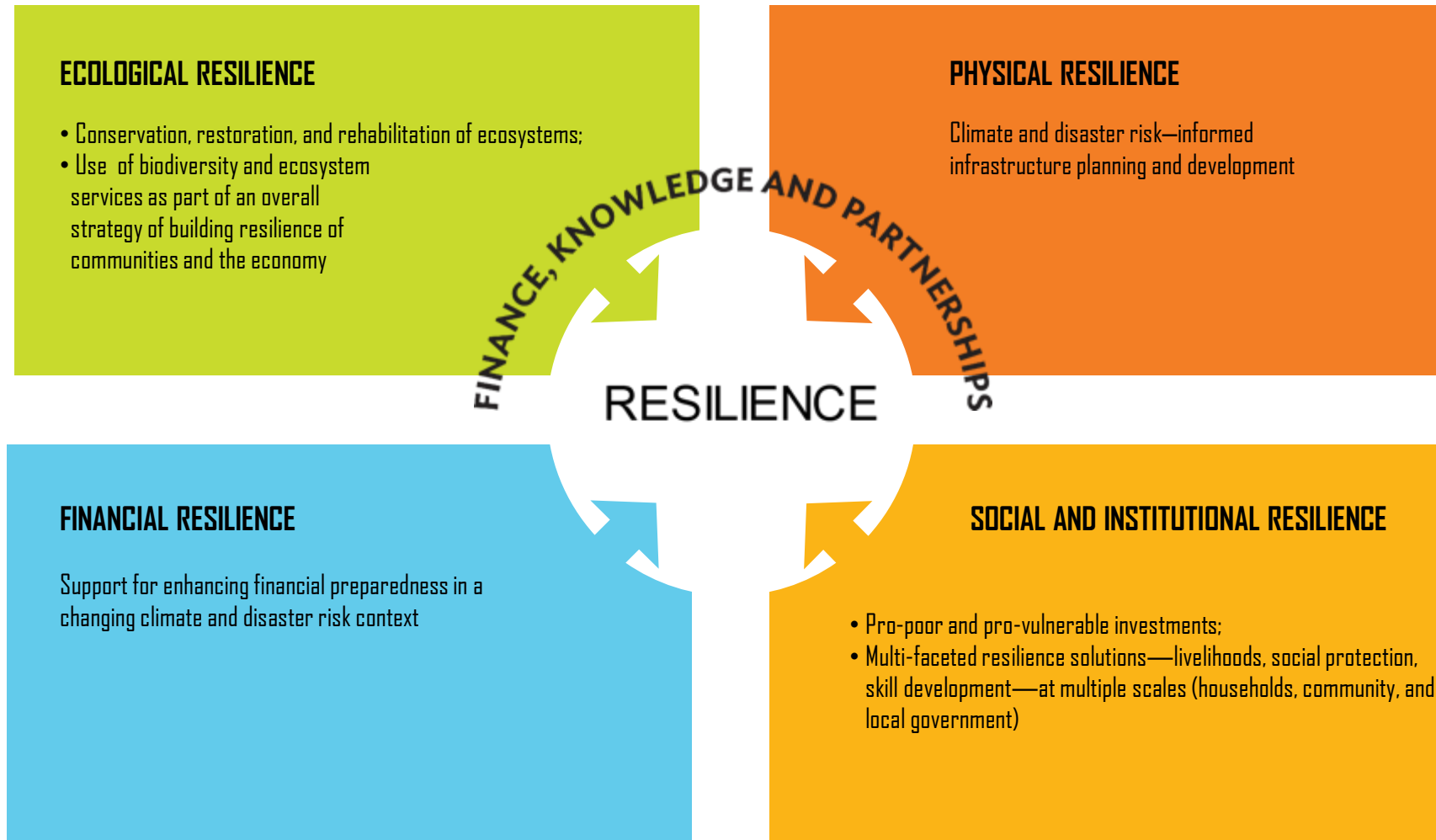


Image Source: ADB

ADB's Climate Risk Management Framework

Integration of climate risk in **country programming**



Climate risk screening and assessment for **projects**

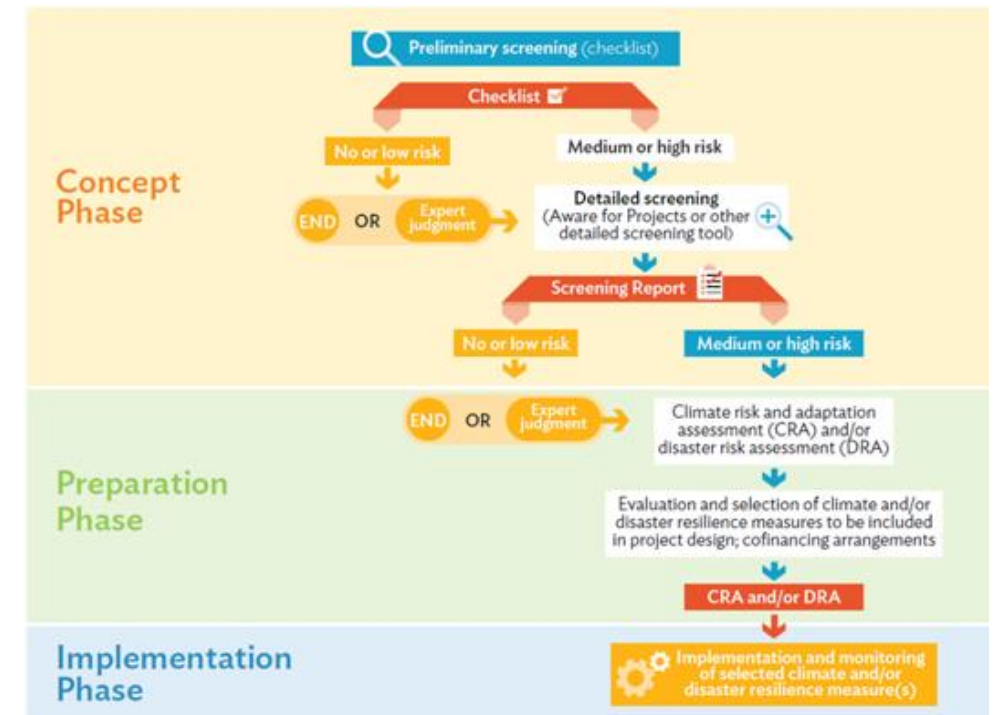
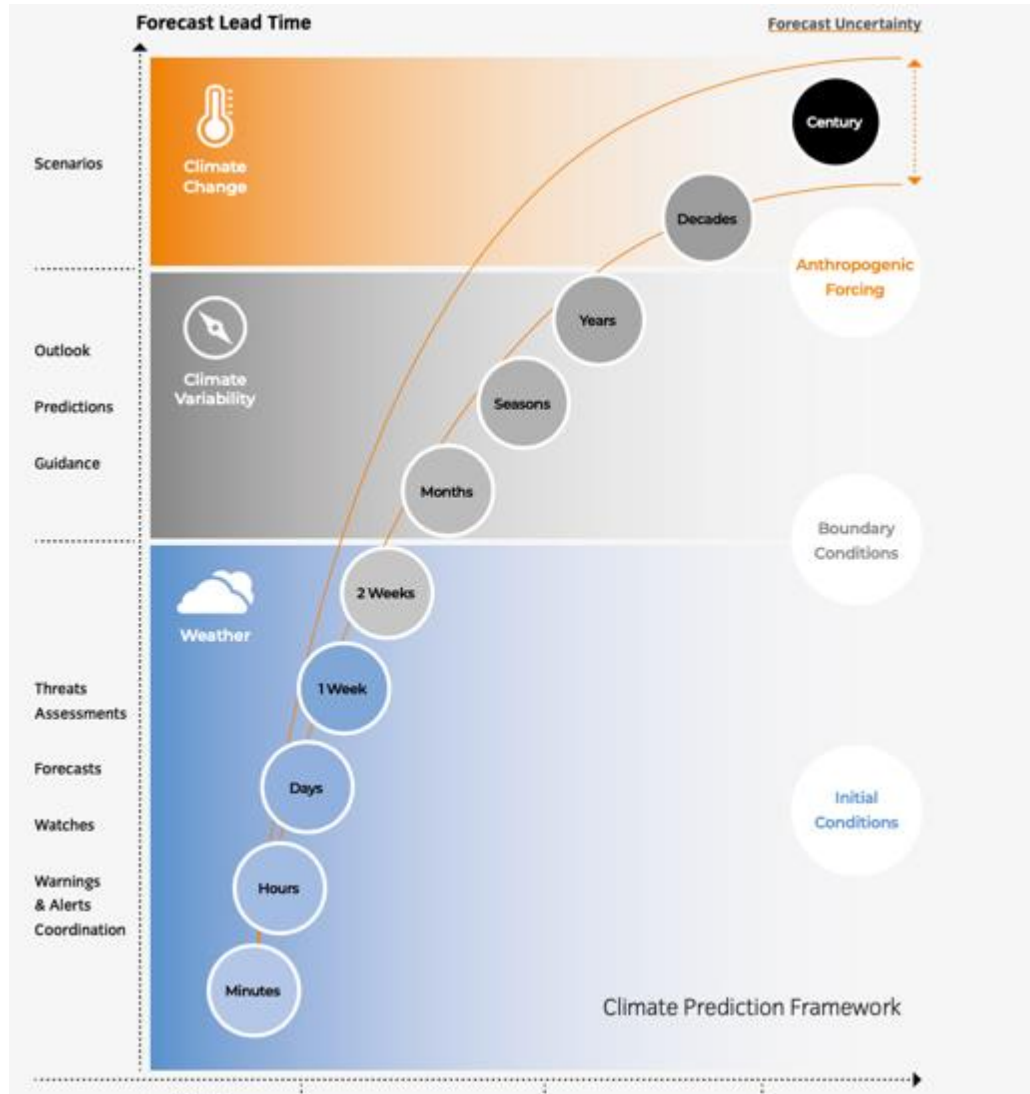


Image Source: ADB

2. ADB's Support for Climate Risk Informed Development

ADB's Support for Climate Risk Informed Development



- Combination of support – to integrate climate risk information in development-related decision making and dedicated support to build **country capacity** on climate services.
- Support varies as per **sector application** with a large focus on climate change and climate variability.
- Support spans **across levels** with more emphasis on national and sub-national level applications.

ADB's Support for Climate Risk Informed Development: Climate Change

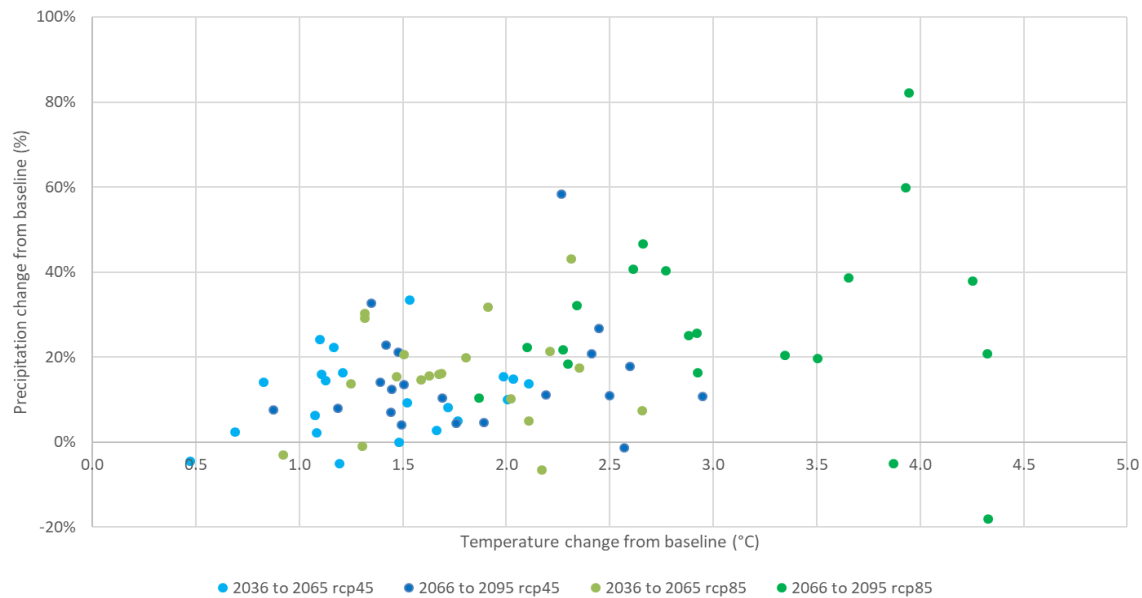
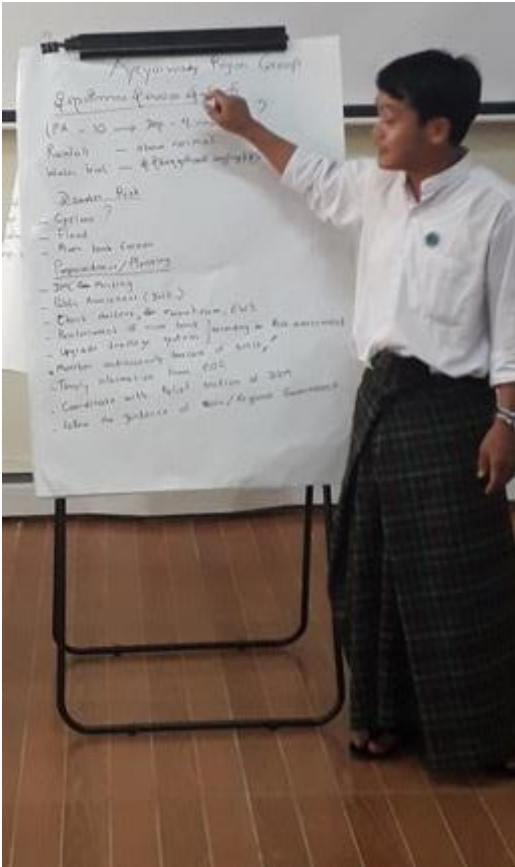


Image Source: NASA statistically downscaled CMIP5 projections

Development of climate risk **information** platform
Financing of **investments** in support of climate resilience
Supporting countries access climate adaptation **finance**

ADB's Support for Climate Risk Informed Development: Climate Variability

- Investments in **climate smart agriculture**
- Technical assistance on capacity building for **seasonal forecast** applications in key sectors
- Use of climate **outlook-based response** for improved planning and budgeting



ADB's Support for Climate Risk Informed Development: Weather

- Support for standalone and embedded investments in early warning system, with a large focus on **floods**
- Interventions in **different sectors**, including water resources management, agriculture, urban, transport and disaster risk management
- Support includes **observation** and monitoring systems, **forecasting**, and **capacity** development

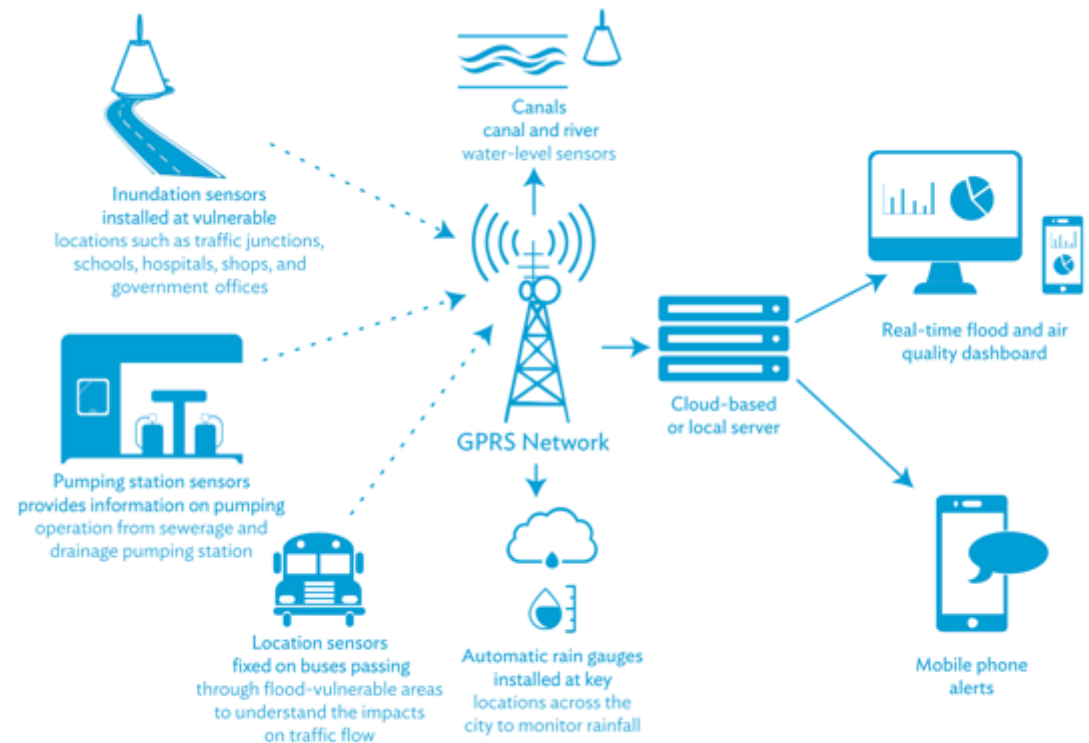


Image Source: ADB

Partnerships to Support Climate Risk Informed Development

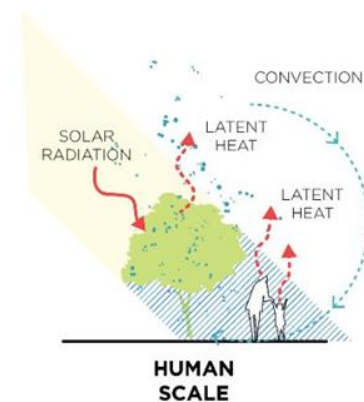
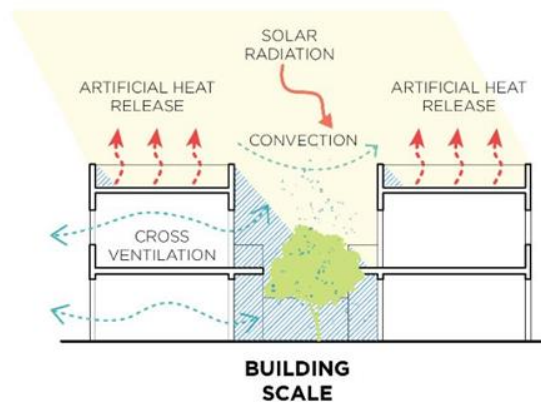
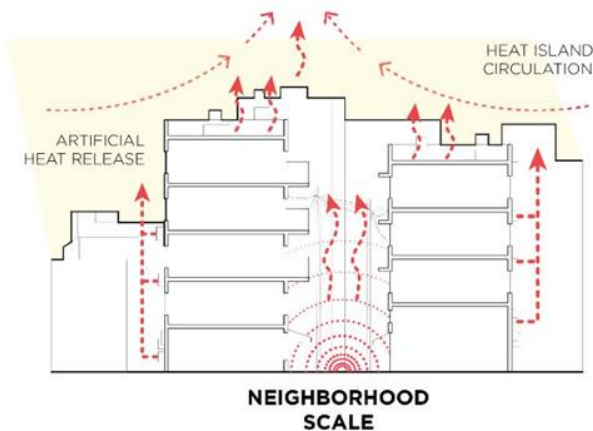
- Asia-Pacific Climate Change Adaptation Information Platform (**AP-PLAT**)
- **Alliance for Hydromet Development** – commitment to ramp up actions to support hydromet services



3. Emerging Directions

Emerging Directions: Urban Heat Stress

- Impact of **heat stress** on urban living condition and economy
- Need for **integrated solutions**— public health, urban design, housing, basic services and livelihoods
- Importance of heat **early warning systems** linked with city level action planning and financing



Emerging Directions: Anticipatory Actions

- Use of weather and climate information to reduce **humanitarian costs** – food security, social protection
- Linkage with **disaster risk financing** initiatives



Image Source: ADB

Emerging Directions: Aligning Financial Flows



- Supporting countries to **align financial flows** with goals of Paris Agreement (mitigation and adaptation)
- **Disclosure** of climate-related financial risk among financial institutions

Conclusion

Pursuing climate-risk informed developed requires

- Business **unusual** approach
- Understanding and addressing risks at **systems** level
- Factoring **uncertainty** in decision-making
- Looking beyond technical solutions to address the **underlying drivers of vulnerability**
- Factor **new learning**

Thank You!