



# NATIONAL CLIMATE REVIEW OF KMA (total 6 pages)

Division	Meteorological Resources Division
Contact	LEE Jae-Won
Phone/email	+82-2-2181-0882/ 2seun@korea.kr
Release	Dec. 13, 2013

## Monthly (November) and Seasonal (Fall : September-November) 2013 Climate Summary

- ◇ The mean temperature (7.1 °C) of November 2013 nationwide is nearly normal and the monthly precipitation (57.4 mm) is above normal.
- ◇ The mean temperature (14.6 °C) and precipitation (231.1 mm) of Fall 2013 nationwide are nearly normal.

- Climate features and long-term trends of November and Fall 2013 have been analyzed with the data collected at the 45 meteorological stations throughout Korea (national average) from 1973 to 2013 (1908-2013 for Seoul).

※ Normal : Average value of climatic element data collected from 1981 to 2010

- **The climatic characteristics of November 2013 are described as follows:**

o For Korea (whole country),

- The mean temperature (7.1 °C), the mean maximum temperature (12.6 °C) and the mean minimum temperature (2.4 °C) were 0.5 °C, 1.0 °C and 0.1 °C below normals, respectively.
- The nationally-averaged precipitation was 57.4 mm, which was 126.5% of normal. The number of the days of rain was 10.8 days, which was 3.7 days more than normal.

※ First day of snow

: Ulleungdo(Nov. 11), Daegwallyeong, Sangju, Mokpo(Nov. 17),  
Cheorwon, Seoul, Dajeon, Tongyeon(Nov. 18), Incheon, Jeju, Gosan(Nov. 19),  
Dongducheon, Chuncheon, Andong(Nov. 25), Sokcho, Pohang, Yeosu(Nov. 27)

- The total number of the hours of sunshine was 194.3 hours, which was 115.9% of normal.

o For Seoul,

- The mean temperature (6.2 °C), the mean maximum temperature (10.7 °C), the mean minimum temperature (2.1 °C) were 1.0 °C, 0.9 °C, 1.1 °C below normals, respectively.
- The amount of precipitation was 46.8 mm, which was 89.1% of normal.
- The number of the days of rain was 12.0 days, which is 3.3 days larger than normal.

※ First day of snow in 2013 is Nov. 18 (normal : Nov. 21, 2012 : Nov. 13).

- The total number of the hours of sunshine was 188.0 hours, which was 122.7% of normal.

□ **The climatic characteristics of Fall 2013 are described as follows:**

- o For Korea (whole country),
  - The mean temperature (14.6 °C), the mean maximum temperature (20.2 °C) and the mean minimum temperature (9.9 °C) were 0.5 °C, 0.1 °C and 0.7 °C above normals, respectively.
  - The nationally-averaged precipitation was 231.1 mm, which was 90.4% of normal. The number of the days of rain was 26.5 days, which was 4.7 days more than normal.
  - The total number of the hours of sunshine was 605.9 hours, which was 112.5% of normal.
- o For Seoul,
  - The mean temperature (14.6 °C) and the mean maximum temperature (19.3 °C) were 0.2 °C, 0.2 °C above normals and the mean minimum temperature (10.3 °C) was same as normal.
  - The amount of precipitation was 198.8 mm, which was 72.7% of normal, which was nearly normal.
  - The number of the days of rain was 25.0 days, which is 0.9 days more than normal.
  - The total number of the hours of sunshine was 628.9 hours, which was 119.0% of normal.

□ **Long-term trend of November and Fall 2013 climate**

- o For Korea (whole country),
  - The national mean temperatures of November and Fall 2000s (2001-2010) are 0.7 °C above those of the same month and season of 1970s.
  - The nationally-averaged precipitation of November 2000s (2001-2010) are 7.4 mm less than that of the same month of 1970s and that of Fall 2000s (2001-2010) are 33.7 mm more than that of the same season of 1970s.
  - The number of the days of rain of November and Fall 2000s are 1.3 days, 0.5 days less than those of the same month and season of 1970s.
  - The total sunshine of November 2000s (2001-2010) is 2.5 hours more than that of the same month and that of Fall 2000s are 27.1 hours less than that of the same season of 1970s, respectively.
- o For Seoul,
  - The mean temperatures of November and Fall 2000s (2001-2010) are 0.8 °C, 1.0 °C above those of the same month and season of 1970s.
  - The precipitation of November 2000s (2001-2010) are 1.5 mm less than that of the same month of 1970s and that of Fall 2000s (2001-2010) are 100.8 mm more than that of the same season of 1970s.
  - The number of the days of rain of November and Fall 2000s are 1.0 days, 0.7 days less than those of the same month and season of 1970s, respectively.
  - The total sunshine of November 2000s (2001-2010) is 6.0 hours more than that of the same month and that of Fall 2000s are 24.0 hours less than that of the same season of 1970s, respectively.

## Appendix 1 Climate features of November 2013 (Nationwide)

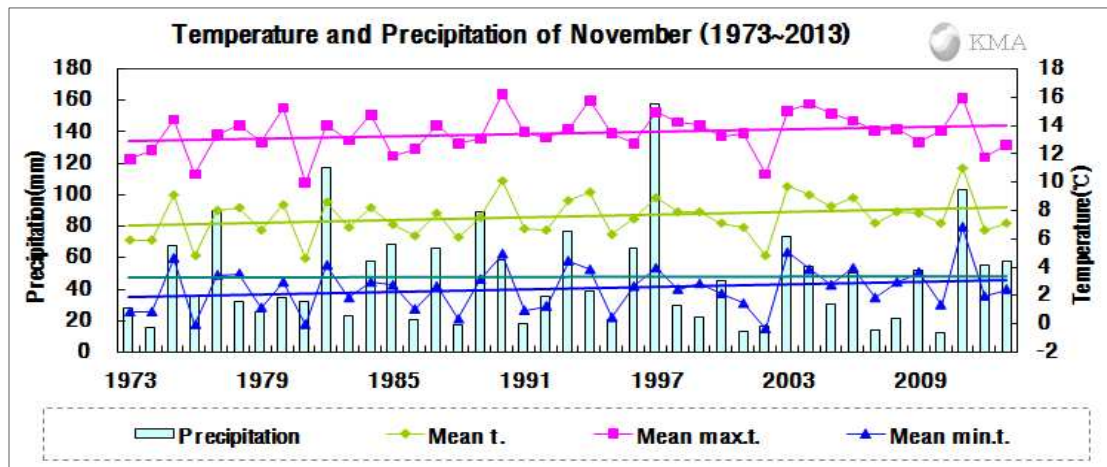


Fig 1. Temperatures (mean, mean maximum, and mean minimum) and precipitation in South Korea during November (1973–2013).

### □ Average values of meteorological elements across Korea during November (1973-2013)

Elements (whole country)	Nov. 2013(a)	Nov. 2012(b)	Normals of Nov. (1981-2010) (c)	a-b	a-c	Rank since 1973 (within 5th)
Mean temperature (°C)	7.1	6.6	7.6	0.5	-0.5	
Mean maximum temp. (°C)	12.6	11.7	13.6	0.9	-1.0	
Mean minimum temp. (°C)	2.4	1.9	2.5	0.5	-0.1	
Precipitation (mm)	57.4	55.5	46.7	1.9 (106.4)	10.7 (126.5)	
Days of rain (day)	10.8	11	7.1	-0.2	3.7	
Sunshine duration (hour)	194.3	177.9	167.6	16.4 (109.2)	26.7 (115.9)	fifth longest
Mean cloud amount (1/10)	4.0	4.7	4.1	-0.7	-0.1	
Days of minimum temperature less than 0°C(day)	9.9	10.4	9.7	-0.5	0.2	
Days of daily temperature range greater than 10°C(day)	15.1	13.6	17.5	1.5	-2.4	
Days of snow (day)	3.8	1.1	1.2	2.7	2.6	second largest

### □ Average values of meteorological elements across Korea during November for each decade (1973-2010)

Year	Mean temp. (°C)	Mean max. temp. (°C)	Mean min. temp. (°C)	Prep. (mm)	Days of rain (day)	Sunshine duration (hour)	Mean cloud amount (1/10)	Days of minimum temperature less than 0°C(day)	Days of daily temperature range greater than 10°C(day)	Days of snow (day)
1973-1980(a)	7.1	13.0	2.1	41.3	7.5	167.5	4.2	10.7	16.9	1.6
1981-1990(b)	7.3	13.1	2.3	55.1	7.8	165.8	4.4	10.3	16.6	1.2
1991-2000(c)	7.7	13.8	2.5	51.2	7.3	166.9	4.0	9.6	18.2	1.3
2001-2010(d)	7.8	13.7	2.6	33.9	6.2	170.0	3.9	9.3	17.7	1.1
2013(e)	7.1	12.6	2.4	57.4	10.8	194.3	4.0	9.9	15.1	3.8
d-a	0.7	0.7	0.5	-7.4	-1.3	2.5	-0.3	-1.4	0.8	-0.5
d-b	0.5	0.6	0.3	-21.2	-1.6	4.2	-0.5	-1.0	1.1	-0.1
d-c	0.1	-0.1	0.1	-17.3	-1.1	3.1	-0.1	-0.3	-0.5	-0.2
e-d	-0.7	-1.1	-0.2	23.5	4.6	24.3	0.1	0.6	-2.6	2.7

## Appendix 2 Climate features of November 2013 (Seoul)

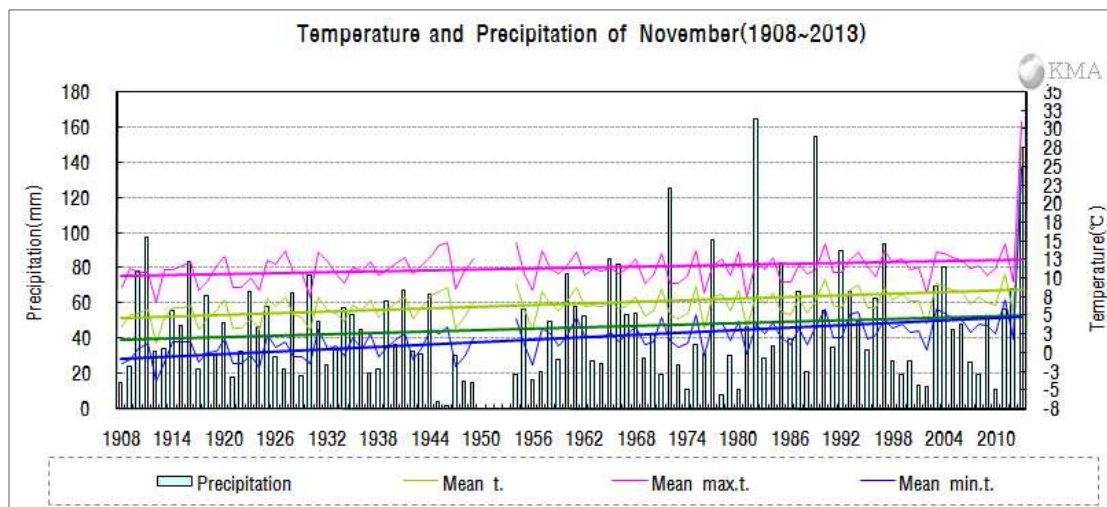


Fig 2. Temperatures (mean, mean maximum, and mean minimum) and precipitation in Seoul during November (1908-2013).

### □ Average values of meteorological elements in Seoul during November (1973-2013)

Elements (Seoul)	Nov. 2013(a)	Nov. 2012(b)	Normals of Nov. (1981-2010)(c)	a-b	a-c	Rank since 1908 (within 5th)
Mean temperature (°C)	6.2	5.5	7.2	0.7	-1.0	
Mean maximum temp. (°C)	10.7	9.5	11.6	1.2	-0.9	
Mean minimum temp. (°C)	2.1	1.8	3.2	0.3	-1.1	
Precipitation (mm)	46.8	67.8	52.5	-21.0 (69.0)	-5.7 (89.1)	
Days of rain (day)	12.0	13.0	8.7	-1.0	3.3	
Sunshine duration (hour)	188.0	181.1	153.2	6.9 (103.8)	34.8 (122.7)	
Mean cloud amount (1/10)	3.9	4.5	4.1	-0.6	-0.2	
Days of minimum temperature less than 0°C(day)	14.0	13.0	7.3	1.0	6.7	
Days of daily temperature range greater than 10°C(day)	9.0	5.0	8.4	4.0	0.6	
Days of snow (day)	4.0	4.0	2.1	0.0	1.9	

### □ Average values of meteorological elements in Seoul during November for each decade (1911-2010)

Year	Mean temp. (°C)	Mean max. temp. (°C)	Mean min. temp. (°C)	Prep. (mm)	Days of rain (day)	Sunshine duration (hour)	Mean cloud amount (1/10)	Days of minimum temperature less than 0°C(day)	Days of daily temperature range greater than 10°C(day)	Days of snow (day)
1911-1920(a)	5.2	10.7	0.1	51.7	8.8	179.8	4.5	15.6	16.9	2.4
1921-1930	5.0	10.4	-0.3	43.2	9.6	176.6	4.3	16.0	16.5	3.5
1931-1940(b)	6.0	11.4	1.2	40.2	9.4	176.9	4.4	11.8	16.1	2.1
1941-1949	6.6	12.2	1.2	29.0	7.0	200.0	4.1	11.6	18.0	1.7
1954-1960	6.6	11.6	1.9	38.1	6.7	159.5	4.2	9.3	13.7	1.4
1961-1970	6.6	11.2	2.4	50.7	10.3	153.9	4.9	9.7	10.0	2.7
1971-1980(c)	6.6	11.3	2.7	39.1	9.1	141.8	4.5	9.9	8.8	2.4
1981-1990	6.7	11.2	2.7	69.6	9.6	156.9	4.4	8.6	8.5	1.9
1991-2000	7.4	11.9	3.3	50.4	8.3	155.1	4.0	6.5	10.6	2.2
2001-2010(d)	7.4	11.7	3.6	37.6	8.1	147.8	3.9	6.8	6.2	2.1
2013(e)	6.2	10.7	2.1	46.8	12.0	188.0	3.9	14.0	9.0	4.0
d-a	2.2	1.0	3.5	-14.1	-0.7	-32.0	-0.6	-8.8	-10.7	-0.3
d-b	1.4	0.3	2.4	-2.6	-1.3	-29.1	-0.5	-5.0	-9.9	0.0
d-c	0.8	0.4	0.9	-1.5	-1.0	6.0	-0.6	-3.1	-2.6	-0.3
e-d	-1.2	-1.0	-1.5	9.2	3.9	40.2	0.0	7.2	2.8	1.9

## Appendix 3 Climate features of Fall 2013 (Nationwide)

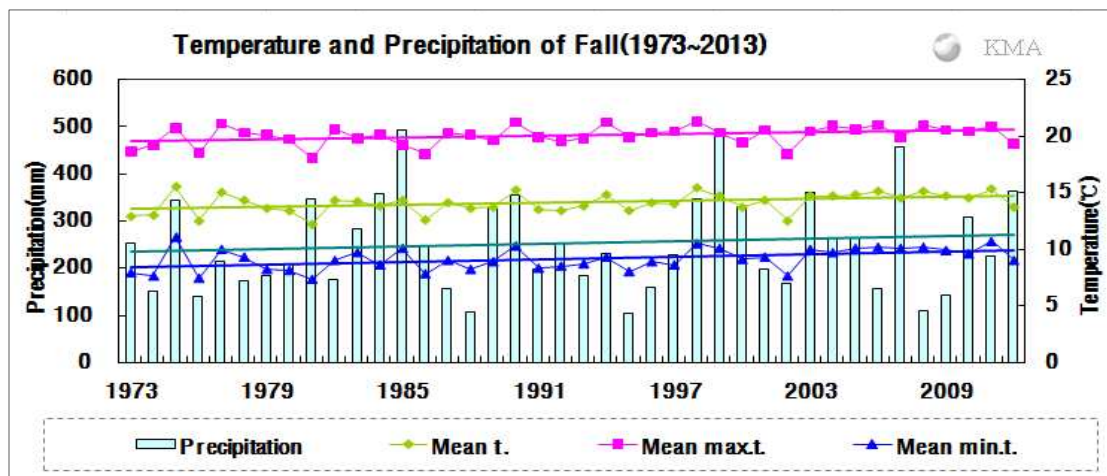


Fig 3. Temperatures (mean, mean maximum, and mean minimum) and precipitation in South Korea during Fall (1973~2013).

### □ Average values of meteorological elements across Korea during Fall (1973~2013)

Elements (whole country)	Fall 2013(a)	Fall 2012(b)	Normals of Fall (1981-2010) (c)	a-b	a-c	Rank since 1973 (within 5th)
Mean temperature (°C)	14.6	13.7	14.1	0.9	0.5	
Mean maximum temp. (°C)	20.2	19.3	20.1	0.9	0.1	
Mean minimum temp. (°C)	9.9	9.0	9.2	0.9	0.7	
Precipitation (mm)	231.1	363.5	259.7	-132.4 (66.3)	-28.6 (90.4)	
Days of rain (day)	26.5	26.6	21.8	-0.1	4.7	
Sunshine duration (hour)	605.9	593.9	538.5	12.0 (102.0)	67.4 (112.5)	the longest
Mean cloud amount (1/10)	4.4	4.7	4.6	-0.3	-0.2	
Days of minimum temperature less than 0°C (day)	10.1	10.6	10.7	-0.5	-0.6	
Days of daily temperature range greater than 10°C (day)	49.3	48.6	52.9	0.7	-3.6	
Days of snow (day)	3.8	1.1	1.2	2.7	2.6	second largest

### □ Average values of meteorological elements across Korea during Fall for each decade (1973~2010)

Year	Mean temp. (°C)	Mean max. temp. (°C)	Mean min. temp. (°C)	Prep. (mm)	Days of rain (day)	Sunshine duration (hour)	Mean cloud amount (1/10)	Days of minimum temperature less than 0°C (day)	Days of daily temperature range greater than 10°C (day)	Days of snow (day)
1973-1980(a)	13.8	19.8	8.7	208.9	22.5	549.3	4.7	11.9	53.9	1.7
1981-1990(b)	13.8	19.8	8.9	284.6	22.8	544.3	4.8	11.5	52.2	1.3
1991-2000(c)	14.1	20.2	9.0	251.9	20.7	548.8	4.4	10.5	55.3	1.3
2001-2010(d)	14.5	20.4	9.7	242.6	22.0	522.2	4.6	10.0	51.1	1.1
2013(e)	14.6	20.2	9.9	231.1	26.5	605.9	4.4	10.1	49.3	3.8
d-a	0.7	0.6	1.0	33.7	-0.5	-27.1	-0.1	-1.9	-2.8	-0.6
d-b	0.7	0.6	0.8	-42.0	-0.8	-22.1	-0.2	-1.5	-1.1	-0.2
d-c	0.4	0.2	0.7	-9.3	1.3	-26.6	0.2	-0.5	-4.2	-0.2
e-d	0.1	-0.2	0.2	-11.5	4.5	83.7	-0.2	0.1	-1.8	2.7

## Appendix 4 Climate features of Fall 2013 (Seoul)

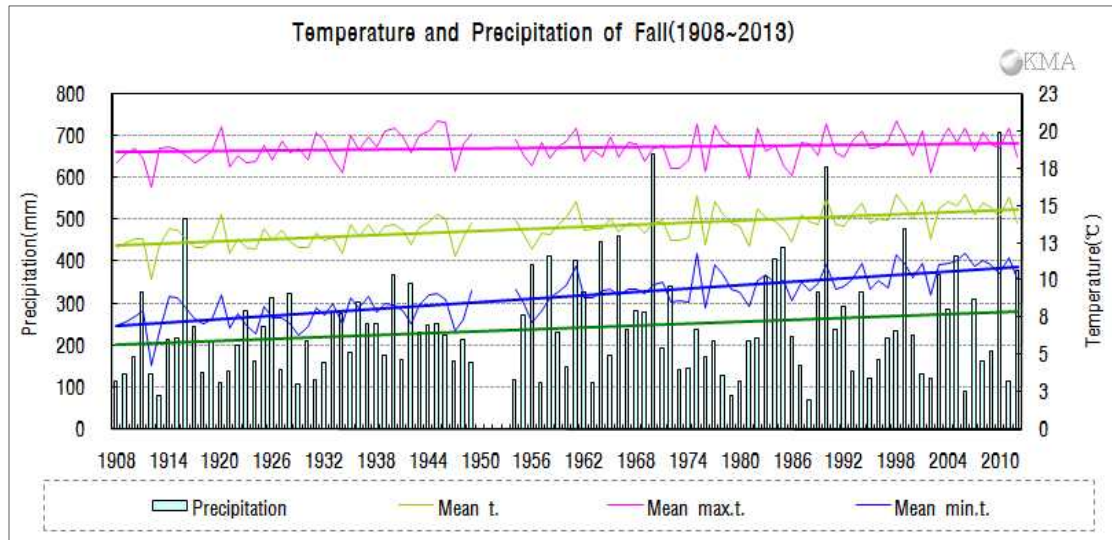


Fig 4. Temperatures (mean, mean maximum, and mean minimum) and precipitation in Seoul during Fall (1908–2013).

### □ Average values of meteorological elements in Seoul during Fall (1973~2013)

Elements (Seoul)	Fall 2013(a)	Fall 2012(b)	Normals of Fall (1981-2010)(c)	a-b	a-c	Rank since 1908 (within 5th)
Mean temperature (°C)	14.6	13.9	14.4	0.7	0.2	
Mean maximum temp. (°C)	19.3	18.3	19.1	1.0	0.2	
Mean minimum temp. (°C)	10.3	10.1	10.3	0.2	0.0	
Precipitation (mm)	198.8	379.1	273.6	-180.3 (52.4)	-74.8 (72.7)	
Days of rain (day)	25.0	30.0	24.1	-5.0	0.9	
Sunshine duration (hour)	628.9	607.3	528.3	21.6 (103.6)	100.6 (119.0)	
Mean cloud amount (1/10)	4.1	4.6	4.4	-0.5	-0.3	
Days of minimum temperature less than 0°C(day)	14.0	13.0	7.5	1.0	6.5	
Days of daily temperature range greater than 10°C(day)	37.0	23.0	32.9	14.0	4.1	
Days of snow (day)	4.0	4.0	2.1	0.0	1.9	

### □ Average values of meteorological elements in Seoul during Fall for each decade (1911-2010)

Year	Mean temp. (°C)	Mean max. temp. (°C)	Mean min. temp. (°C)	Prep. (mm)	Days of rain (day)	Sunshine duration (hour)	Mean cloud amount (1/10)	Days of minimum temperature less than 0°C(day)	Days of daily temperature range greater than 10°C(day)	Days of snow (day)
1911-1920(a)	12.7	18.5	7.6	215.9	26.3	625.7	5.0	16.9	56.3	2.4
1921-1930	12.6	18.4	7.2	211.6	24.7	619.5	4.7	17.7	58.0	3.5
1931-1940(b)	13.2	19.2	8.2	235.5	25.6	630.1	4.8	12.8	58.1	2.3
1941-1949	13.4	19.5	8.2	221.4	24.1	646.5	4.6	12.3	61.2	1.7
1954-1960	13.4	18.8	8.7	239.7	23.4	561.4	4.7	9.7	48.7	1.4
1961-1970	13.8	18.9	9.4	337.0	27.0	537.3	4.9	9.7	42.3	2.8
1971-1980(c)	13.8	18.8	9.5	175.5	24.8	510.7	4.7	10.1	38.7	2.5
1981-1990	13.9	18.7	9.7	301.8	23.7	556.4	4.8	8.9	35.4	2.0
1991-2000	14.4	19.2	10.2	242.6	24.4	541.7	4.3	6.7	37.2	2.3
2001-2010(d)	14.8	19.3	10.9	276.3	24.1	486.7	4.3	6.9	26.1	2.1
2013(e)	14.6	19.3	10.3	198.8	25.0	628.9	4.1	14.0	37.0	4.0
d-a	2.1	0.8	3.3	60.4	-2.2	-139.0	-0.7	-10.0	-30.2	-0.3
d-b	1.6	0.1	2.7	40.8	-1.5	-143.4	-0.5	-5.9	-32.0	-0.2
d-c	1.0	0.5	1.4	100.8	-0.7	-24.0	-0.4	-3.2	-12.6	-0.4
e-d	-0.2	0.0	-0.6	-77.5	0.9	142.2	-0.2	7.1	10.9	1.9