



# MONTHLY CLIMATE REVIEW OVER KOREA (total 5 pages)

Division	Meteorological Resources Division
Contact	SOHN Seung-Hee
Phone/email	+82-2-2181-0882/ 2seun@korea.kr
Release	July 10, 2014

## Monthly (June) 2014 Climate Summary

- ◇ The mean temperature (21.9 °C) for June 2014 nationwide was above normal.
  - ◇ The monthly amount of precipitation (77.6 mm) was 49.8% of normal.
- Climate features and long-term trends in June 2014 have been analyzed with the data collected at the 45 meteorological stations throughout Korea (national average) from 1973 to 2014 (1908-2014 for Seoul).
- ※ Normal : Average value of climatic element data collected from 1981 to 2010
- **The climatic characteristics in June 2014 are described as follows:**
- o For Korea (whole country),
    - The mean temperature (21.9 °C), the mean minimum temperature (17.9 °C) and the mean maximum temperature (26.8 °C) and were 0.7 °C, 1.2 °C, 0.3 °C above normals, respectively.
    - The mean minimum temperature was the fourth highest in a record extending back to 1973.
    - The nationally-averaged precipitation was 77.6 mm, which was 49.8% of normal. The number of the days of rain was 10.4 days, which was 0.7 days more than normal.
    - The total number of the hours of sunshine was 172.6 hours, which was 95.1% of normal.
  - o For Seoul,
    - The mean temperature (23.1 °C), the mean maximum temperature (27.8 °C), the mean minimum temperature (19.7 °C) were 0.9 °C, 0.7 °C, 1.5 °C above normals, respectively.
    - The amount of precipitation was 98.1 mm, which was 73.6% of normal.
    - The number of the days of rain was 11.0 days, which was 1.1 above normal.
    - The total number of the hours of sunshine was 184.9 hours, which was 101.6% of normal.

**Long-term trend in June 2014 climate**

- o For Korea (whole country),
  - The national mean temperatures in June 2000s (2001-2010) is 0.7 °C above those of the same month in 1970s.
  - The nationally-averaged precipitation in June 2000s (2001-2010) is 15.7 mm less than that of the same month in 1970s.
  - The number of the days of rain in June 2000s are 1.4 days less than those of the same month in 1970s.
  - The total sunshine in June 2000s (2001-2010) is 12.5 hours less than that of the same month in 1970s.
- o For Seoul,
  - The mean temperatures in June 2000s (2001-2010) are 0.9 °C above those of the same month in 1970s.
  - The precipitation in June 2000s (2001-2010) is 0.1mm less than that of the same month in 1970s.
  - The number of the days of rain in June 2000s are 0.3 days less than those of the same month in 1970s.
  - The total sunshine in June 2000s (2001-2010) is 12.5 hours less than that of the same month in 1970s.

**Remarks**

	temperature difference between the normal temperature (°C)		precipitation ratio of the normal precipitation (%)	
	ten-day	month	ten-day	month
above(more)	>0.7	>0.5	>130	>120
nearly	-0.7~0.7	-0.5~0.5	50~130	70~120
below(less)	<-0.7	<-0.5	<50	<70

## Appendix 1 Climate features of June 2014 (Nationwide)

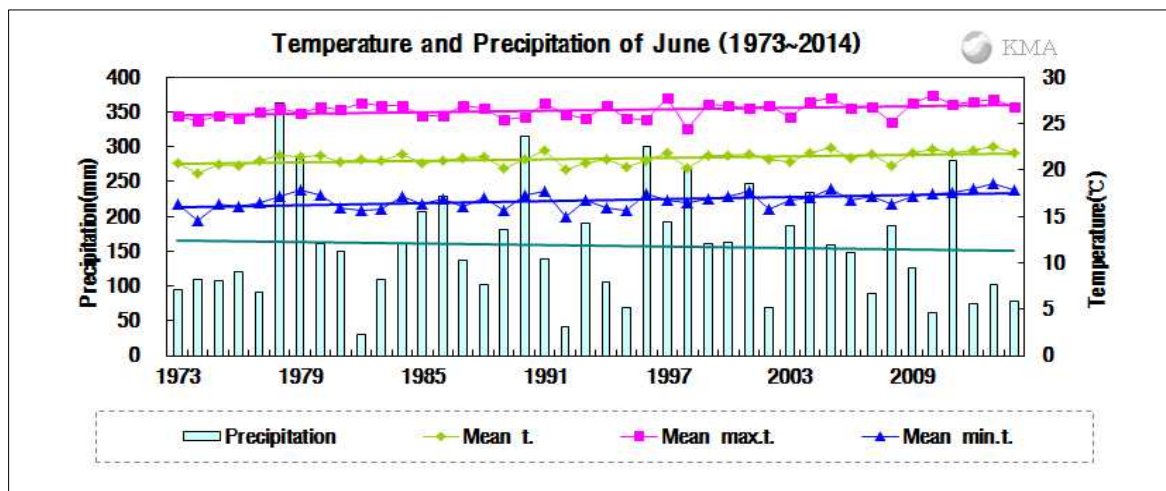


Fig 1. Temperatures (mean, mean maximum and mean minimum) and precipitation in South Korea during June (1973-2014).

### □ Average values of meteorological elements across Korea during May (1973-2014)

Elements (whole country)	June 2014(a)	June 2013(b)	Normals of June (1981-2010) (c)	a-b	a-c	Rank since 1973 (within 5th)
Mean temperature (°C)	21.9	22.6	21.2	-0.7	0.7	
Mean maximum temp. (°C)	26.8	27.7	26.5	-0.9	0.3	
Mean minimum temp. (°C)	17.9	18.6	16.7	-0.7	1.2	the forth highest
Precipitation (mm)	77.6	101.1	158.6	-23.5 (94.4%)	-81.0 (49.8%)	
Days of rain (day)	10.4	10.2	9.7	0.2	0.7	
Sunshine duration (hour)	172.6	188.9	181.4	-16.3 (91.4%)	-8.8 (95.1%)	
Mean cloud amount (1/10)	6.8	6.3	6.3	0.5	0.5	
Precipitation more than 80mm/day(day)	0.0	0.3	0.3	-0.3	-0.3	
Days of maximum temperature more than 33°C(day)	0.2	0.4	0.6	-0.2	-0.4	

### □ Average values of meteorological elements across Korea during June for each decade (1973-2010)

Year	Mean temp. (°C)	Mean max. temp. (°C)	Mean min. temp. (°C)	Prep. (mm)	Days of rain (day)	Sunshine duration (hour)	Mean cloud amount (1/10)	Precipitation more than 80mm/day (day)	Days of maximum temperature more than 33°C (day)
1973-1980(a)	20.9	26.0	16.5	166.4	11.2	185.6	6.6	0.3	0.3
1981-1990(b)	21.1	26.4	16.4	162.0	9.6	193.6	6.4	0.3	0.5
1991-2000(c)	21.1	26.3	16.6	163.2	9.8	177.5	6.3	0.4	0.6
2001-2010(d)	21.6	26.9	17.0	150.7	9.8	173.1	6.1	0.3	0.7
2014(e)	21.9	26.8	17.9	77.6	10.4	172.6	6.8	0.0	0.2
d-a	0.7	0.9	0.5	-15.7	-1.4	-12.5	-0.5	0.0	0.4
d-b	0.5	0.5	0.6	-11.3	0.2	-20.5	-0.3	0.0	0.2
d-c	0.5	0.6	0.4	-12.5	0.0	-4.4	-0.2	-0.1	0.1
e-d	0.3	-0.1	0.9	-73.1	0.6	-0.5	0.7	-0.3	-0.5

## Appendix 2 Climate features of June 2014 (Seoul)

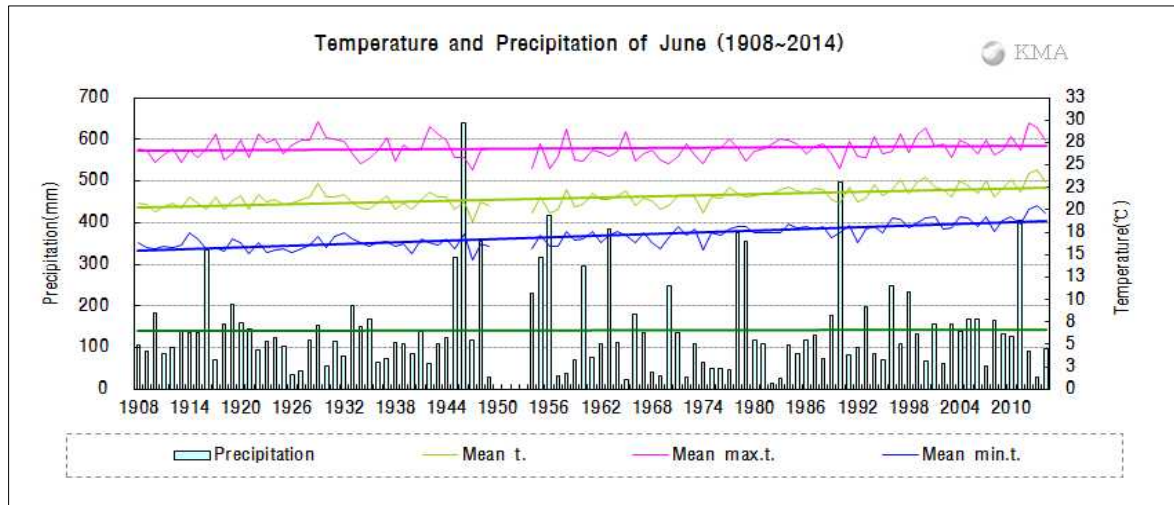


Fig 2. Temperatures (mean, mean maximum and mean minimum) and precipitation in Seoul during June (1908-2014).

### □ Average values of meteorological elements in Seoul during June (1908-2014)

Elements (Seoul)	June 2014(a)	June 2013(b)	Normals of June (1981-2010) (c)	a-b	a-c	Rank since 1908 (within 5th)
Mean temperature (°C)	23.1	24.4	22.2	-1.3	0.9	
Mean maximum temp. (°C)	27.8	29.2	27.1	-1.4	0.7	
Mean minimum temp. (°C)	19.7	20.5	18.2	-0.8	1.5	the third highest
Precipitation (mm)	98.1	28.3	133.2	69.8 (346.6%)	-35.1 (73.6%)	
Days of rain (day)	11.0	9.0	9.9	2.0	1.1	
Sunshine duration (hour)	184.9	224.0	182.0	-39.1 (82.5%)	2.9 (101.6%)	
Mean cloud amount (1/10)	6.7	5.4	6.1	1.3	0.6	
Precipitation more than 80mm/day(day)	0.0	0.0	0.2	0.0	-0.2	
Days of maximum temperature more than 33°C(day)	0.0	0.0	0.4	0.0	-0.4	

### □ Average values of meteorological elements in Seoul during June for each decade (1911-2010)

Year	Mean temp. (°C)	Mean max. temp. (°C)	Mean min. temp. (°C)	Prep. (mm)	Days of rain (day)	Sunshine duration (hour)	Mean cloud amount (1/10)	Precipitation more than 80mm/day (day)	Days of maximum temperature more than 33°C (day)
1911-1920(a)	20.8	26.6	16.2	152.7	11.7	228.3	7.0	0.2	0.8
1921-1930	21.2	27.7	15.8	98.3	8.1	258.8	6.3	0.2	1.2
1931-1940(b)	20.7	26.6	16.4	116.0	10.0	221.6	6.8	0.0	0.1
1941-1949	20.8	26.9	16.2	210.3	11.4	233.7	6.7	0.7	1.0
1954-1960	20.6	26.1	16.5	200.5	12.0	179.8	6.9	0.4	1.3
1961-1970	21.1	26.3	16.9	134.6	11.1	193.8	6.6	0.3	0.5
1971-1980(c)	21.5	26.5	17.5	133.0	10.9	171.8	6.6	0.1	0.3
1981-1990	21.9	26.9	17.7	133.9	9.6	205.1	6.2	0.3	0.1
1991-2000	22.4	27.3	18.2	132.9	9.5	186.6	6.0	0.2	1.0
2001-2010(d)	22.4	27.0	18.7	132.9	10.6	154.4	6.0	0.2	0.1
2014(e)	23.1	27.8	19.7	98.1	11.0	184.9	6.7	0.0	0.0
d-a	1.6	0.4	2.5	-19.8	-1.1	-73.9	-1.0	0.0	-0.7
d-b	1.7	0.4	2.3	16.9	0.6	-67.2	-0.8	0.2	0.0
d-c	0.9	0.5	1.2	-0.1	-0.3	-17.4	-0.6	0.1	-0.2
e-d	0.7	0.8	1.0	-34.8	0.4	30.5	0.7	-0.2	-0.1

