



MONTHLY CLIMATE REVIEW OVER KOREA (total 4 pages)

Division	National Climate Data Center
Contact	KIM, Kum-Lan
Phone/email	+82-2-2181-0891/ hyunmj@korea.kr
Release	April 8, 2015

March 2015 Monthly Climate Summary

- ◇ The nationwide mean temperature (6.7 °C) in March 2015 was 0.8 °C above normal.
 - ◇ The nationally-averaged precipitation (40.5 mm) was 69.0 % of normal.
- Climate features and long-term trends in March 2015 were analyzed with the data collected at the 45 meteorological stations throughout Korea (national average) from 1973 to 2015 (1908-2015 for Seoul).
- ※ Normal : Average value of climatic element data collected from 1981 to 2010

□ The climatic characteristics in March 2015

o Korea (as a whole),

- The mean temperature (6.7 °C), the mean maximum temperature (13.5 °C) were 0.8 °C, 1.7 °C above normal, respectively. And the mean minimum temperature (0.5 °C) was were 0.1 °C below normal
- The nationally-averaged precipitation was 40.5 mm, which was 69.0 % of normal. The number of rainy days was 5.1, which was 3.0 days less than normal.
- The total number of hours of sunshine was 263.5, which was 135.8 % of normal.

o Seoul,

- The mean temperature (6.3 °C), the mean maximum temperature (12.4 °C) were 0.6 °C, 2.0 °C above normal, respectively. And the mean minimum temperature (1.0 °C) was were 0.6 °C below normal
- The amount of precipitation was 9.6 mm, which was 20.3 % of normal.
- The number of rainy days was 4.0, which was 3.4 days less than normal.
- The total number of hours of sunshine was 270.8, which was 143.3 % of normal.

□ **Long-term¹⁾ trend in March 2015 climate**

o Korea (as a whole),

- The national mean temperatures in March in the 2000s (2001-2010) was 1.1 °C above that of in the 1970s (1973-1980).
- The nationally-averaged precipitation in March in the 2000s was 1.8 mm more than that of in the 1970s.
- The number of rainy days in March in the 2000s was 1.2 days more than that of in the 1970s.
- The total sunshine hours in March in the 2000s was 15.5 hours less than that of in the 1970s.

o Seoul,

- The mean temperatures in March in the 2000s (2001-2010) was 1.2 °C above that of in the 1970s (1971-1980).
- The precipitation in March in the 2000s was 4.1 mm more than that of in the 1970s.
- The number of rainy days in March in the 2000s was 1.9 days more than that of in the 1970s.
- The total sunshine hours in March in the 2000s was 25.6 hours less than that of in the 1970s.

1) 2000s : 2001~2010 / 1970s of Korea(Seoul) : 1973~1980(1971~1980)

Appendix 1 Climate features of March 2015 (Nationwide)

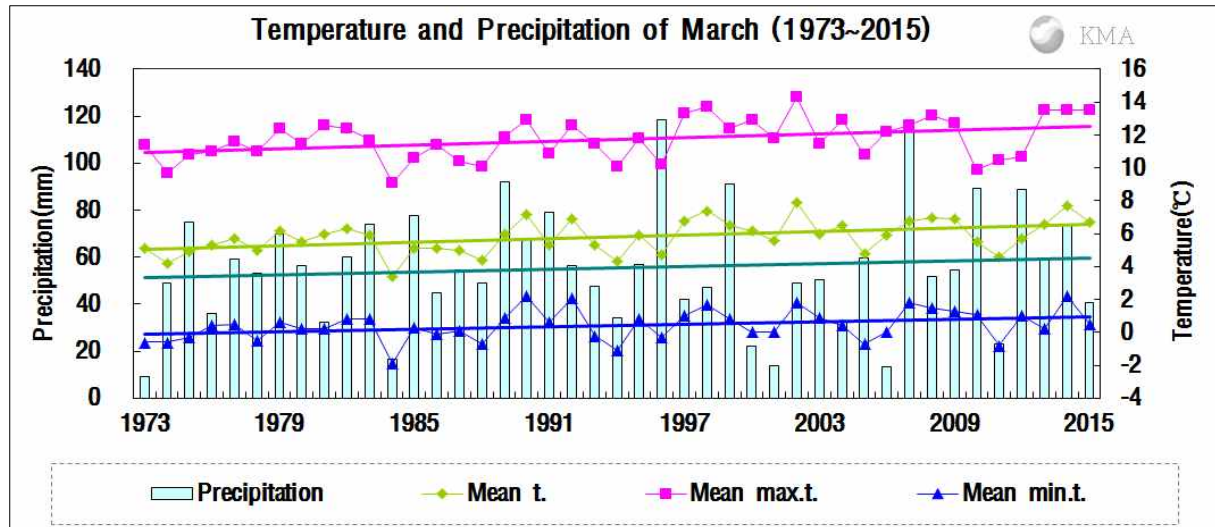


Fig 1. Temperatures (mean, mean maximum and mean minimum) and precipitation in South Korea during March (1973–2015).

□ The nationwide average value of meteorological element during March (1973-2015)

Elements (whole country)	Mar. 2015(a)	Mar. 2014(b)	Normals of Mar. (1981-2010)(c)	a-b	a-c	Rank since 1973 (within 5th)
Mean temperature (°C)	6.7	7.7	5.9	-1.0	0.8	
Mean maximum temp. (°C)	13.5	13.5	11.8	0.0	1.7	the third highest
Mean minimum temp. (°C)	0.5	2.2	0.6	-1.7	-0.1	
Precipitation (mm)	40.5	74.1	56.4	-33.6 (65.6%)	-15.9 (69.0%)	
Days of rain (day)	5.1	9.1	8.1	-4.0	-3.0	minimum days rank 3th
Sunshine duration (hour)	263.5	212.3	194.0	51.2 (124.1%)	69.5 (135.8%)	the highest
Mean cloud amount (1/10)	3.2	4.3	4.8	-1.1	-1.6	the lowest
Days of minimum temperature less than 0°C(day)	16.2	11.7	14.0	4.5	2.2	
Days of maximum temperature more than 10°C(day)	22.6	21.5	20.3	1.1	2.3	
Asian dust days (day)	5.6	1.6	1.8	4.0	3.8	maximum days rank 3th

□ The nationwide average value of meteorological element during March in each decade (1973-2010)

Year	Mean temp. (°C)	Mean max. temp. (°C)	Mean min. temp. (°C)	Prep. (mm)	Days of rain (day)	Sunshine duration (hour)	Mean cloud amount (1/10)	Days of minimum temperature less than 0°C(day)	Days of maximum temperature more than 10°C(day)	Asian dust days (day)
1973-1980(a)	5.2	11.2	0.0	51.0	7.2	206.3	4.7	15.9	19.2	0.6
1981-1990(b)	5.5	11.3	0.3	56.9	8.2	201.9	4.9	14.7	19.2	0.5
1991-2000(c)	5.9	11.9	0.6	59.5	7.7	189.2	4.8	14.0	20.8	1.0
2001-2010(d)	6.3	12.2	0.8	52.8	8.4	190.8	4.6	13.3	21.0	3.8
2015(e)	6.7	13.5	0.5	40.5	5.1	263.5	3.2	16.2	22.6	5.6
d-a	1.1	1.0	0.8	1.8	1.2	-15.5	-0.1	-2.6	1.8	3.2
d-b	0.8	0.9	0.5	-4.1	0.2	-11.1	-0.3	-1.4	1.8	3.3
d-c	0.4	0.3	0.2	-6.7	0.7	1.6	-0.2	-0.7	0.2	2.8
e-d	0.4	1.3	-0.3	-12.3	-3.3	72.7	-1.4	2.9	1.6	1.8

Appendix 2 Climate features of March 2015 (Seoul)

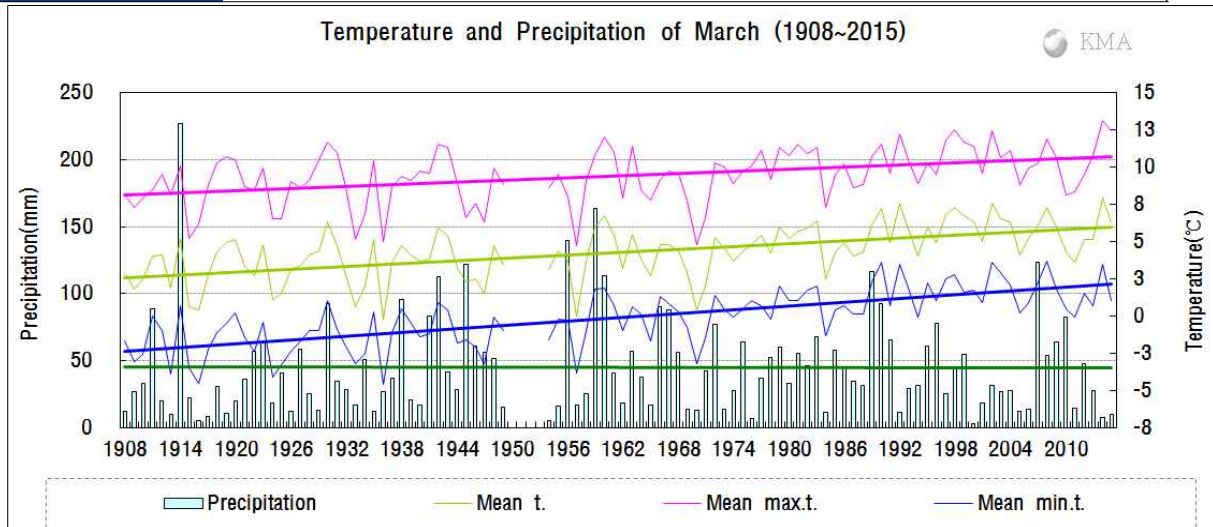


Fig 2. Temperatures (mean, mean maximum and mean minimum) and precipitation in Seoul during March (1908-2015).

□ The average value of meteorological element during March in Seoul (1908-2015)

Elements (Seoul)	Mar. 2015(a)	Mar. 2014(b)	Normals of Mar. (1981-2010)(c)	a-b	a-c	Rank since 1908 (within 5th)
Mean temperature (°C)	6.3	7.9	5.7	-1.6	0.6	
Mean maximum temp. (°C)	12.4	13.1	10.4	-0.7	2.0	the third highest
Mean minimum temp. (°C)	1.0	3.5	1.6	-2.5	-0.6	
Precipitation (mm)	9.6	7.2	47.2	2.4 (133.3%)	-37.6 (20.3%)	
Days of rain (day)	4.0	6.0	7.4	-2.0	-3.4	minimum days rank 3th
Sunshine duration (hour)	270.8	214.7	189.0	56.1 (126.1%)	81.8 (143.3%)	the second highest
Mean cloud amount (1/10)	2.8	3.9	4.6	-1.1	-1.8	the lowest
Days of minimum temperature less than 0°C(day)	13.0	10.0	9.5	3.0	3.5	
Days of maximum temperature more than 10°C(day)	22.0	20.0	16.8	2.0	5.2	the third highest
Asian dust days (day)	8.0	2.0	1.9	6.0	6.1	maximum days rank 2th

□ The average value of meteorological element during March in Seoul in each decade (1911-2010)

Year	Mean temp. (°C)	Mean max. temp. (°C)	Mean min. temp. (°C)	Prep. (mm)	Days of rain (day)	Sunshine duration (hour)	Mean cloud amount (1/10)	Days of minimum temperature less than 0°C(day)	Days of maximum temperature more than 10°C(day)	Asian dust days (day)
1911-1920(a)	3.3	8.8	-1.6	44.2	7.6	216.3	5.2	20.6	12.2	0.3
1921-1930	3.5	8.9	-1.7	41.8	7.6	210.0	5.0	21.1	11.2	0.2
1931-1940(b)	3.1	8.4	-1.5	34.0	8.7	214.4	4.8	19.5	12.0	0.0
1941-1949	3.6	8.9	-1.1	63.5	9.0	214.6	5.2	18.7	13.4	0.0
1954-1960	3.9	9.0	-0.4	68.5	8.6	190.1	5.1	16.0	13.4	0.3
1961-1970	3.8	8.8	-0.3	43.2	6.7	208.4	5.0	16.7	13.5	0.3
1971-1980(c)	4.6	9.8	0.5	41.3	6.3	195.5	4.7	12.4	15.4	0.5
1981-1990	5.1	10.0	1.1	55.7	7.3	208.1	4.8	11.4	15.4	0.7
1991-2000	6.0	10.8	1.8	40.5	6.8	188.9	4.5	8.3	17.9	0.9
2001-2010(d)	5.8	10.3	1.9	45.4	8.2	169.9	4.6	8.9	17.1	4.0
2015(e)	6.3	12.4	1.0	9.6	4.0	270.8	2.8	13.0	22.0	8.0
d-a	2.5	1.5	3.5	1.2	0.6	-46.4	-0.6	-11.7	4.9	3.7
d-b	2.7	1.9	3.4	11.4	-0.5	-44.5	-0.2	-10.6	5.1	4.0
d-c	1.2	0.5	1.4	4.1	1.9	-25.6	-0.1	-3.5	1.7	3.5
e-d	0.5	2.1	-0.9	-35.8	-4.2	100.9	-1.8	4.1	4.9	4.0